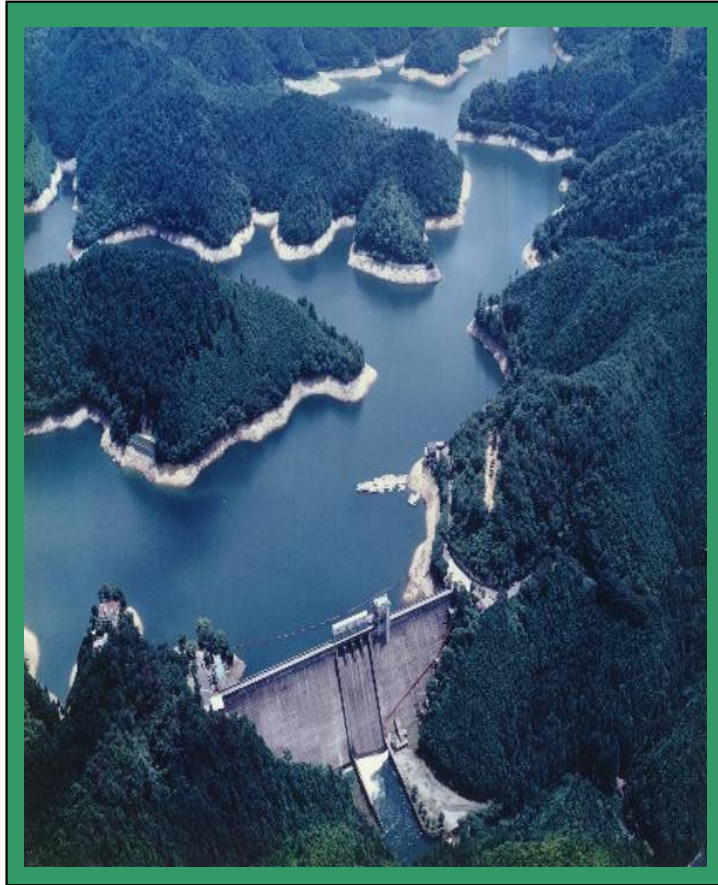
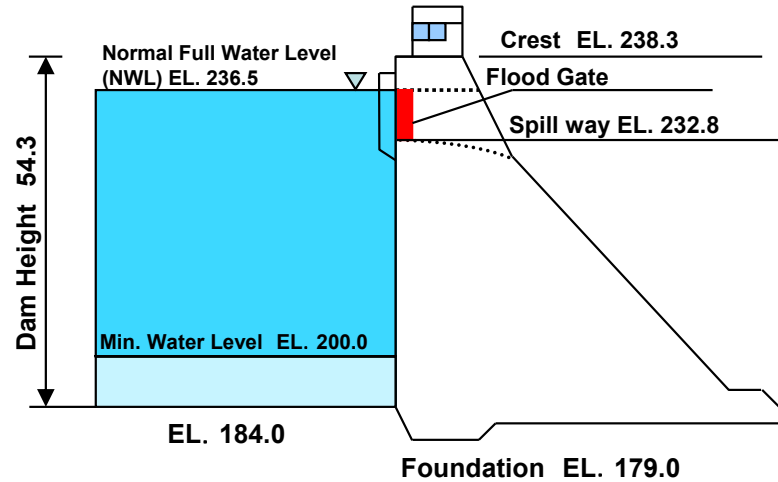


Tsuburo Dam



Tsuburo Dam Structure

Tsuburo Dam is a straight concrete gravity dam with a straight crest. The water pressure is supported by weight of the dam itself.

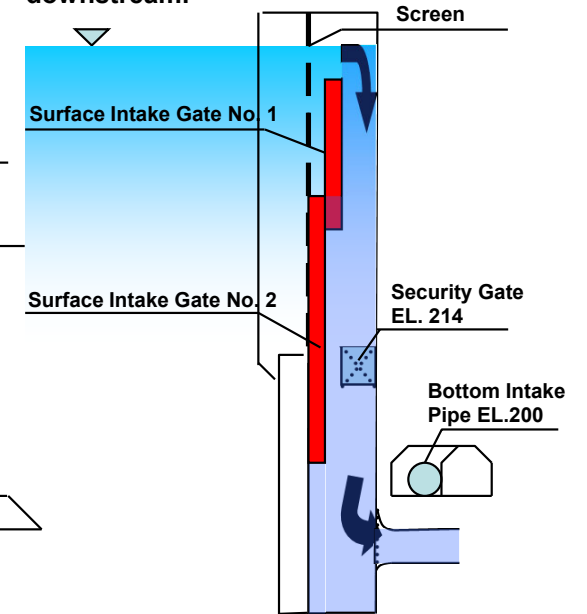


Dam Specifications

Name of River	Tsuburo River
Location	Yoshino, Yoshino-gun, Nara
Form	Straight Concrete Gravity Dam
Dam Top Elevation	238.30m
Foundation Elevation	179.00m
Foundation Geology	Muddy Hard Sandstone
Dam Height	54.30m
Dam Length	240.00m
Dam Volume	222,300m ³
Catchment Area	38.8km ²
Capacity Area	150ha
Total Storage Capacity	25,650,000m ³
Normal Capacity Level	236.5m
Water Storage Capacity	24,600,000 ³
Design Flood Volume	325m ³ /s
Flood Structure	Roller Gates (6.0m × 4.0m × 4 gates)
Max. Intake Volume	11m ³ /s

Intake Facilities

At the intake, warmer surface water suitable for paddy and non-paddy fields is taken for provide to downstream.

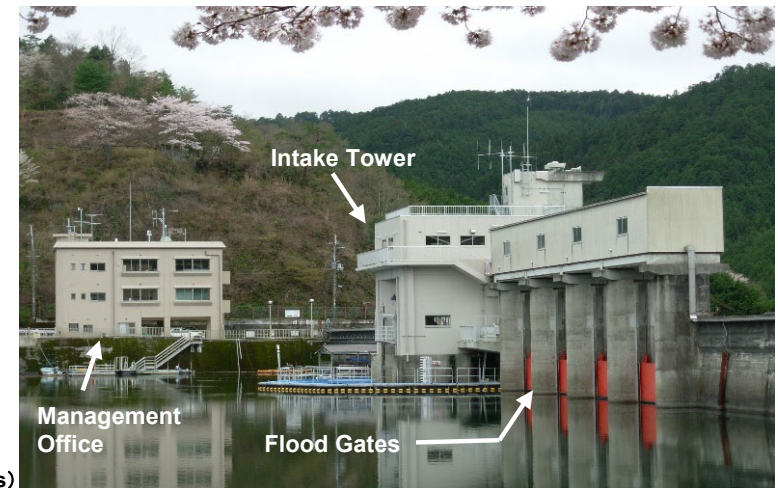


Role of Tsuburo Dam

The Tsuburo Dam, constructed under the state managed Totsu and Kino Rivers Land Improvement Project, was constructed to provide agricultural water to the Yamato and Kii plains, and tap water for Nara Prefecture.

Beneficiary Area

	Paddy	Non-Paddy	Total
Nara	6,560ha	166ha	6,726ha
Wakayama	3,743ha	1,254ha	4,997ha



Alarm Facility/Hydrological Observation Facility

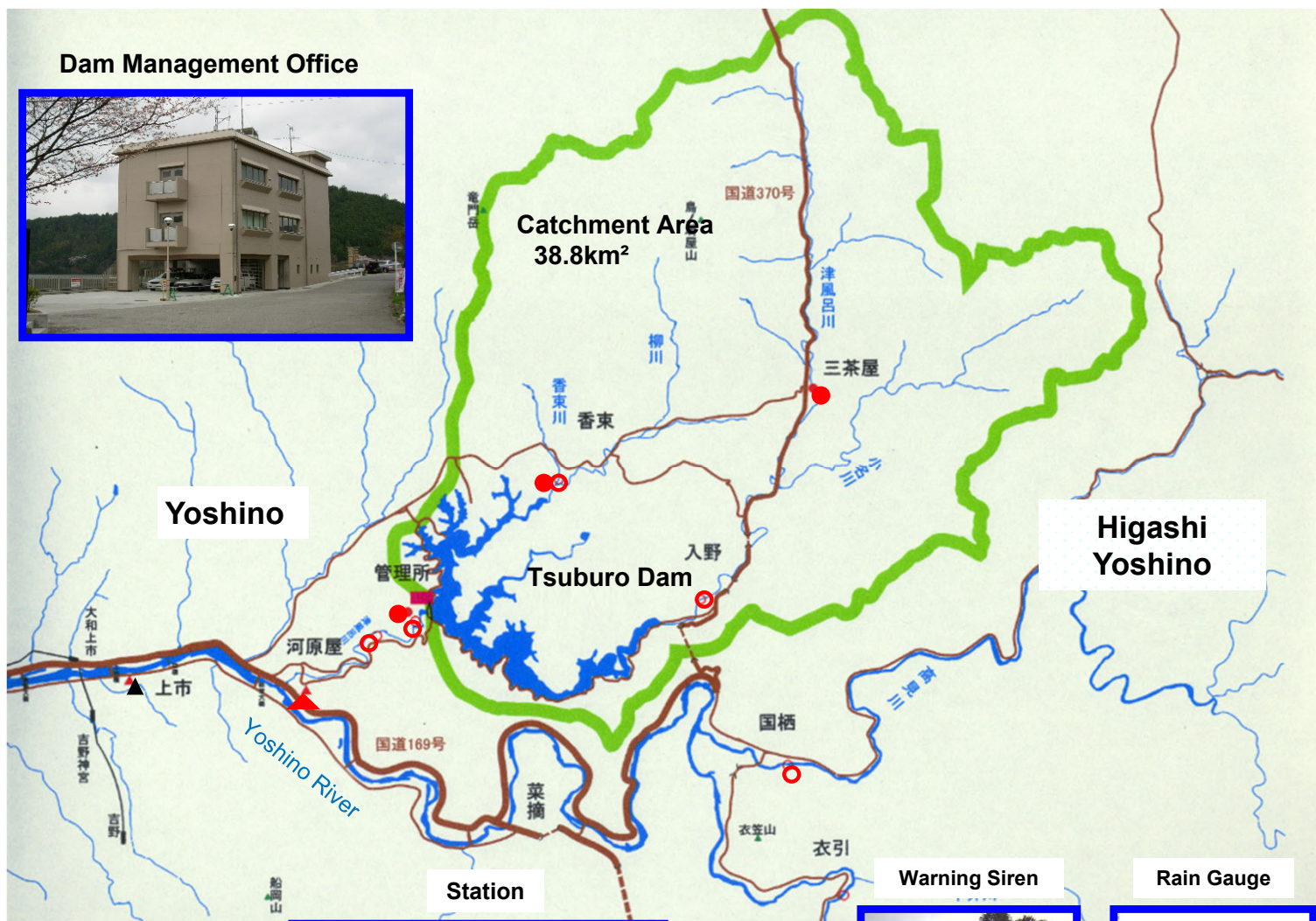
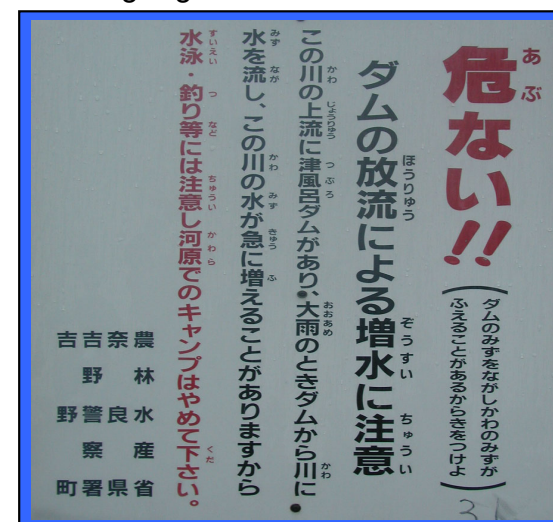
In order to manage the dam properly, there are observatories for water level and precipitation to acquire hydro-meteorological data, and warning stations to sound siren when release water.

Flood Response

When the inflow into the dam reservoir increases sharply due to heavy rain, water can be released from the flood gates as needed.

At such times, it is held that warning for fishermen and/or campers in the river downstream through warning sirens and/or patrols, and also notification to river administrators, prefectures, municipalities, police and so on.

Warning Sign



Dam Management Office



Yoshino





Higashi Yoshino

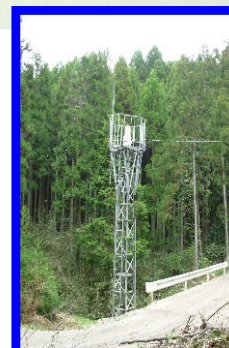
Station

Warning Siren

Rain Gauge

Legend

-  Water Level Station
-  Rain Gauge
-  Warning Station
-  Basin



Kinki Regional Agricultural Administration Office
Tsuburo Dam Management Office

849-5 Kaharaya, Yoshino, Yoshino-gun, Nara, 639-3102

TEL 07463-2-2335 FAX 07463-2-0836